

ENERGY BUSINESS

Around the world with HanmiGlobal

Wind

Solar

Waste to Energy

Fuel Cell and Microgrid

Conventional(Coal & LNG)

Customer challenge

Communicate, integrate, and control project contractors delivering international standards as required.

Our solution

With global PMC expertise combined with locals, provide overall project management, engineering review and construction management services

Value deliver

Make a positive difference to people and ensure community benefited from the project.



Wind Power



Solar Power



Waste to Energy



Fuel Cell and Microgrid



Coal/Oil-Fired Power



LNG/GAS Power

CONTENTS

01	Management Philosophy
03	Energy Business Services
05	Energy Business Portfolio
	Wind Power 05
	Solar Power 07
	Waste to Energy 15
	Fuel Cell and Microgrid
21	Coal / Oil-Fired Power
25	LNG / GAS Power
27	Other Landmark Projects
28	Overseas Activities

Management Philosophy

An excellent company contributing to the development of human society by creating value in the construction industry

The HanmiGlobal management philosophy embodies our grand aspirations, beliefs, and convictions. Our management philosophy sets forth our mission and core values, serving as the basis for all management practices and decision making, and as a standard by which we measure our progress and make changes as needed.

The HanmiGlobal mission is "Contribute to a better society by creating value in the construction industry through continuous innovation." Our mission is the fundamental reason for our existence, and our obligations to clients, employees, stakeholders, and human society at large are defined in details accordingly.

The five core values of HanmiGlobal are Integrity, Safety, Customer, Excellence, and Contribution. By keeping and practicing these core values, we strive together to achieve our mission.

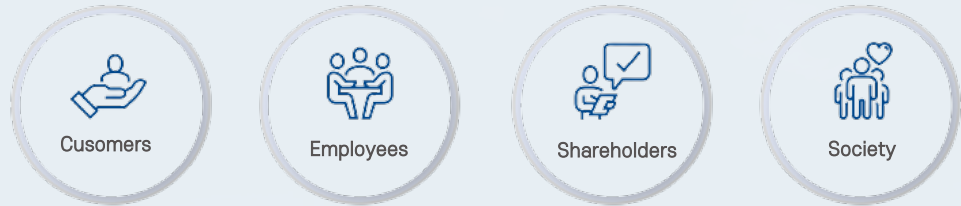
Vision

We will evolve into an excellent company with excellent people, and build an employee-centered & delighted organization with top talent by 2027



Mission

Contribute to a better society by creating value in the construction industry through continuous innovation



For customers : Creating customer value through unrivaled quality and trust

For employees : Cultivating an enjoyable and rewarding work environment

For shareholders : Maximizing shareholder value through transparent management practices and enhanced corporate value

For society : Fulfilling our corporate social responsibility through ESG management

Mission



Integrity → We think and act with honesty, integrity, and transparency to our colleagues, clients, and other business partners.

Contribution → We uphold our reputation as ethical corporate citizens, and actively participate in social contribution activities.

Safety → We always put safety first based on respect for human dignity.

Customer → We are firmly committed to bringing customer success in all behaviors and system operations.

Excellence → We pursue continuous innovation and strive for excellence to deliver high-quality services.

Energy Business Services



Technical
Advisor



Due
Diligence



Feasibility
Study



Program/Project
Management



Engineering, Procurement
and Construction



Independent
Power Producer



Design
Review



O&M
Services

Wind Power



Jeju Hanlim Offshore Wind Power Plant

Jeju Hanlim Offshore Wind Power Plant is a project with 100MW of generation capacity and will be the first privately owned mega-scale offshore wind project in Korea. The Client, Jeju Hanlim Offshore Wind, consist of five (5) different shareholders with KEPCO as the major shareholder. HanmiGlobal provides technical services to the Client with the Owner's Engineer role

Scope : Owner's Engineer
Client : Jeju Hanlim Offshore wind
Location : Jeju, Korea
Capacity : 100MW(5.56MW x 18Units)

Wind Power



01 **Uljin Hyunjong Mt Wind Power Plant**

Scope :Project Management
Client :Uljin Wind Power Co., Ltd
Location :Uljin, Korea
Capacity :53.4MW(3.6MW x 14Units, 3MW x 1Units)

02 **Saemanguem Offshore Wind Power Plant**

Scope :Project Management
Client :Saemangeum Offshore Wind Co., Ltd
Location :Goosan, Korea
Capacity :98.9MW(4.3MW x 23Units)

03 **Yeongyang Wind Power Plant**

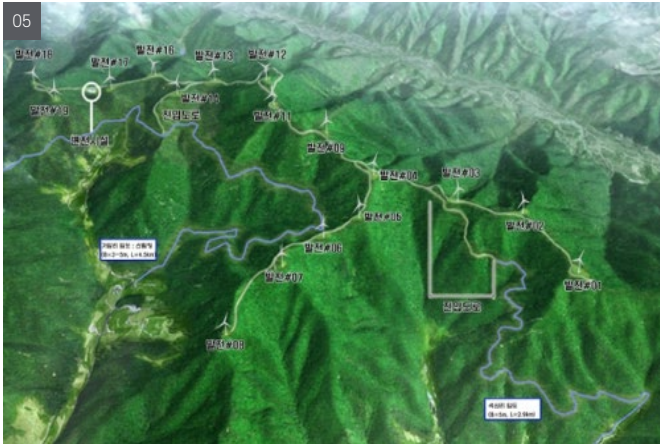
Scope :Project Management
Client :Yeongyang Eco Power
Location :Yeongyang, Korea
Capacity :75.9MW(3.45MW x 22Units)

04 **Jeju Gasiri Wind Power Plant**

Scope :Project Management
Client :SK D&D
Location :Jeju Island, Korea
Capacity :30MW(3.0MW x 10Units)

05 **Gunwi PoongBack Wind Power Plant**

Scope :Project Management
Client :Poongbaek Wind Power Co., Ltd
Location :Gunwi, Korea
Capacity :82.5MW(5.5MW x 15Units)



Solar Power



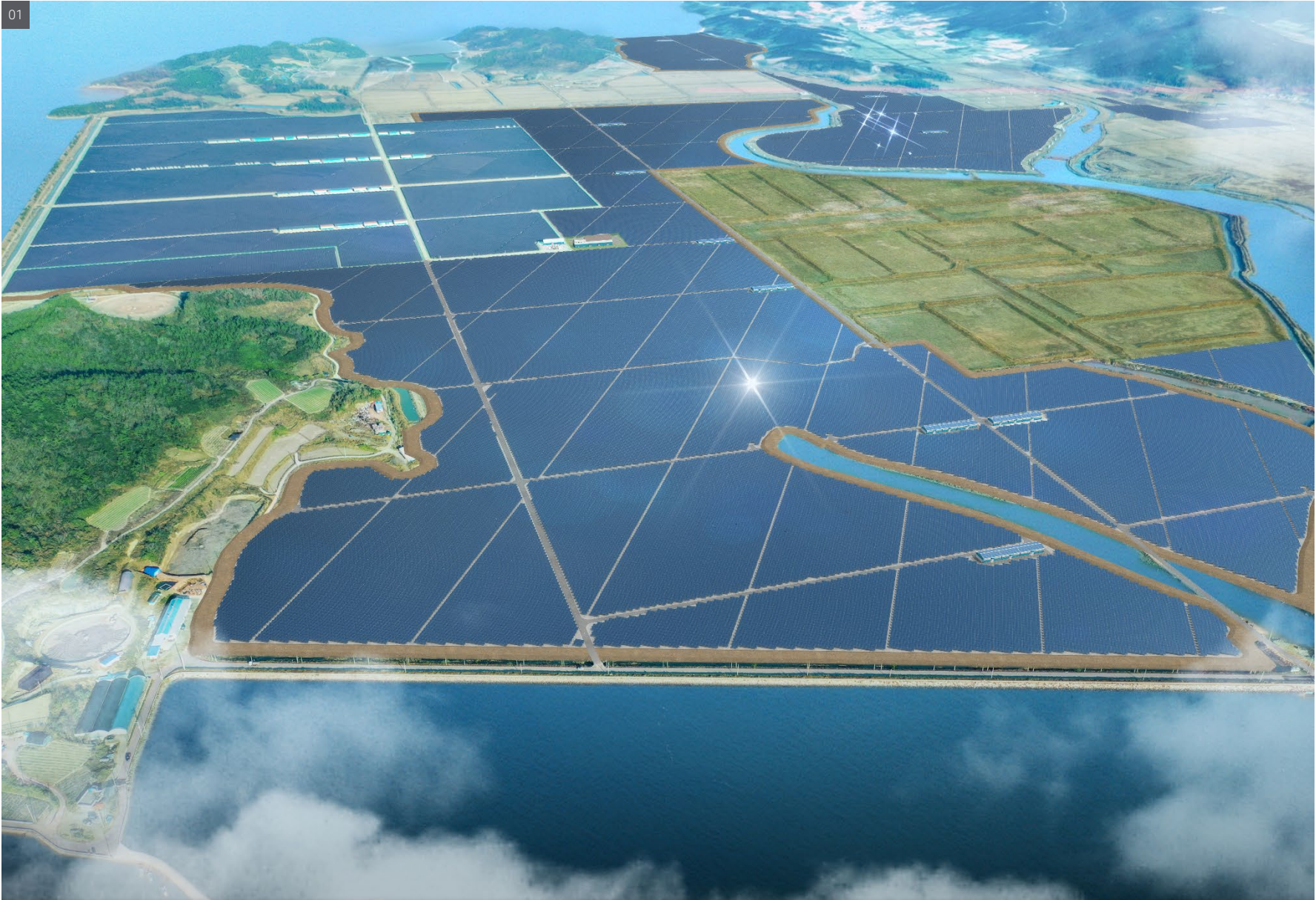
Yeongam Solar Power Plant

Yeongam Photovoltaic Power Plant is located in Hwalseongsan where the site was an abandoned ranch near the existing wind farm. The total site area is 296ha which is similar to Yeouido's area. Total 246,000 PV module produces 120GWH electricity for a year, and it supplies electricity to 28,000 houses. Also, the adopted Energy Storage System(ESS) enables to secure grid reliability and power quality. HG's PM services shortened the construction period and made COD start by six months earlier, maximizing the Client's profit.

Scope :Project Management
Client :Yeongam Solar Power
Location :Yeongam, Korea
Capacity :100MW

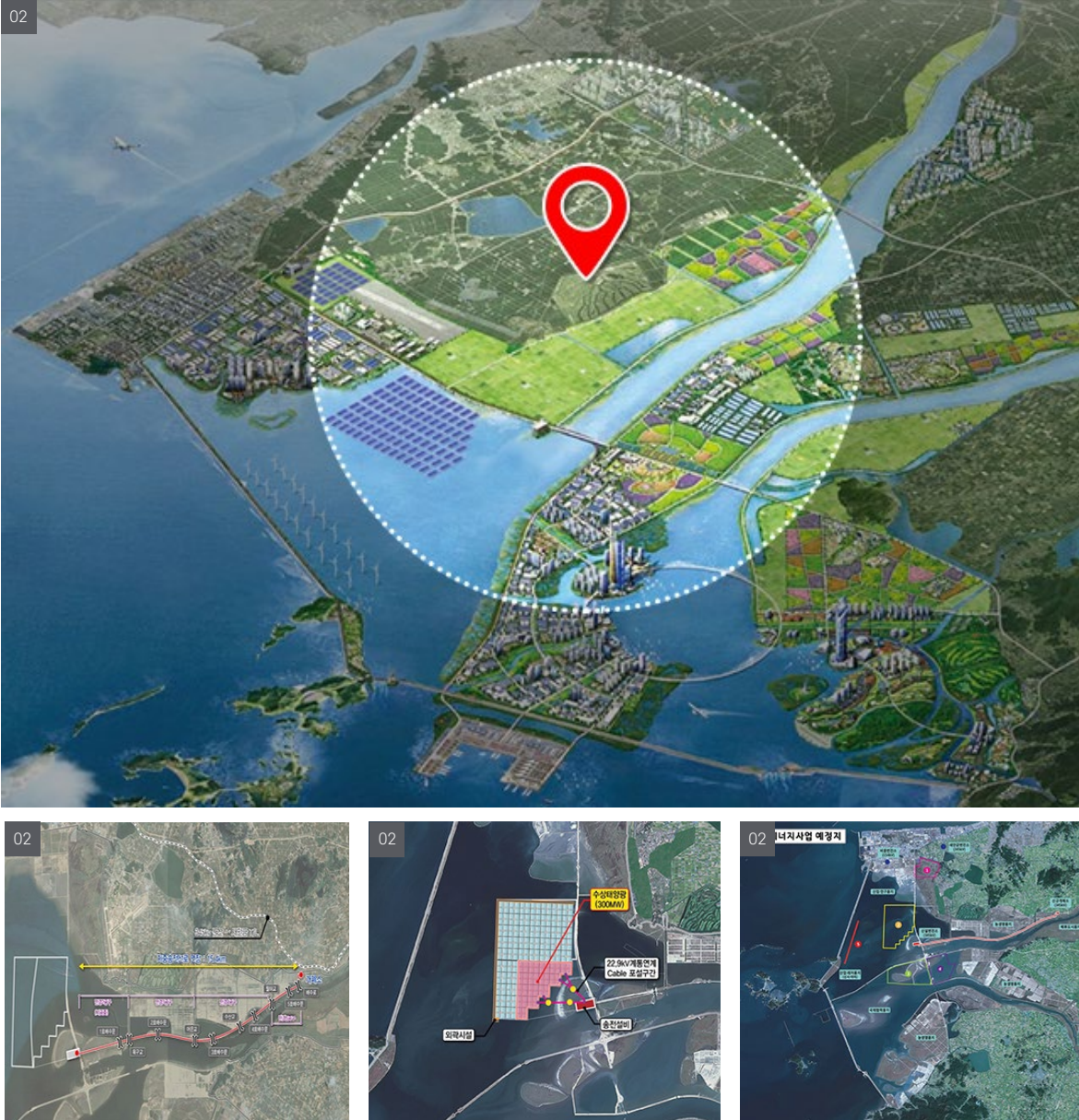


Solar Power



01 Anjwa Solar Power Plant Phase I & II

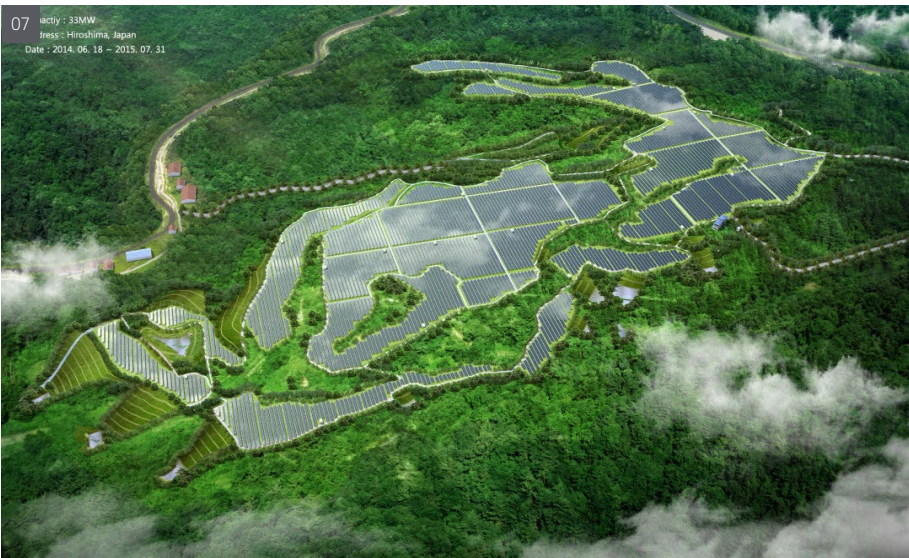
Scope : Project Management
Client : Anjwa SmartPower Plant Solar City Corporation
Location : Sinangun, Korea
Capacity : Phase1: 96MW / Phase2: 204MW



02 Saemangeum Floating Solar Plant and Grid Connection

Scope : Project Management
Client : Saemangeum Solar Power
Location : Gunsan, Korea
Capacity : 300MW

Solar Power



03 Daejeon Bicycle Road Solar Power Plant

Scope : Engineering, Procurement and Construction
Client : Haeom
Location : Daejeon, Korea
Capacity : 1MW

04 Inje Solar Power Plant

Scope : Engineering, Procurement and Construction
Client : Hanmi Inje
Location : Inje, Korea
Capacity : 1MW

05 Chile Solar Power Plant

Scope : Project Management
Client : KOSPO
Location : Santiago, Chile
Capacity : 57.92MW

06 Kirishma Solar Power Plant

Scope : Project Management
Client : SolariantPortfolio Two GK
Location : Jasolar, Hanhwa Q cell
Capacity : 41MW

07 Tojo Solar Power Plant

Scope : Project Management
Client : Mega Solar Factory
Location : Shobara, Japan
Capacity : 33MW

08 Okayama Misaki Solar Power Plant

Scope : Project Management
Client : IT Solar 3
Location : Misaki, Japan
Capacity : 34MW

Waste to Energy



Ulsan Waste to Energy Project

Ulsan Waste to Energy (WtE) plant is a project of “Resource recovery facilities” incinerating up to 220.8 t/d SRF industrial waste to generate steam of 60 t/h. To maximize its productivity and availability the project has an understanding of DOR (Division of Responsibility) with suburb facilities to avoid overlapped investment in the project. The CODs was July, 2016.

Scope :Project Management
Client :KR Energy
Location :Ulsan, Korea
Capacity :220.8 t/d

Waste to Energy



01 SS Energy Recycling Plant
Scope : Engineering, Procurement and Construction
Client : SS Energy
Location : Wonju, Korea
Capacity : 347 ton/day

02 Nonsan Biomass Power Plant
Scope : Project Management
Client : Korea Ratings Co., Ltd
Location : Nonsan, Korea
Capacity : 10.26MW

03 Food Waste Treatment Facility
Scope : Technical Advisor
Client : Macquarie Capital Korea
Location : Icheon & Seoul, Korea
Capacity : 2650 ton/day

04 Medical Waste Facility
Scope : Technical Advisor
Client : Korea Ratings Co., Ltd
Location : Yongin, Korea
Capacity : 4.84MW, 20Gcal/h

05 Thailand Municipal Solid Waste Recycling Project
Scope : Technical Advisor
Client : Thailand Environment Infra
Location : Samut Sakhon, Thailand
Capacity : 700 ton/day

06 Hwaseong Recycling Plant
Scope : Engineering, Procurement and Construction
Client : GE Chemical
Location : Hwaseong, Korea
Capacity : 135 ton/day

Fuel Cell and Microgrid



Godeok Green Energy Power Plant

This project delivered a 20MW capacity Fuel Cell Power Plant in unused land near metro depot in order to increase Seoul city energy-independence. Seven (7) units of 2.8MW capacity Molten Carbonate Fuel Cell were installed at a cost of \$9.3 Million.

Scope : Project Management
Client : SK E&S
Location : Seoul, Korea
Capacity : 30MW



01	Oseong Fuel Cell Power Plant	02	Incheon Fuel Cell Power Plant	03	Dominican Republic Microgrid Project	04	SmartZero Energy City
Scope	: Feasibility Study	Scope	: Technical Advisor	Scope	: Feasibility Study	Scope	: Technical Advisor
Client	: KEPCO-ES Co., Ltd	Client	: Pastem Gren Energy.	Client	: Electric Power Public Tasks	Client	: GS E&C
Location	: Pyeongtaek, Korea	Location	: Incheon, Korea	Location	: Evaluation & Planning Center	Location	: Busan, Korea
Capacity	: 9.68MW	Capacity	: 20MW	Location	: Dominican Republic	Capacity	: 60MW, 109Gcal/h
				Capacity	: Renewable energy, Electric Vehicles, ESS, Residential		

Coal/Oil-Fired Power



Goseong Hai Thermal Power Plant

Goseong Hai #1,2 USC (Ultra-Supercritical) coal-fired power plant constructed two (2) 1040MW units of generation capacity. It is the largest IPP (Independent Power Project) in Korea. Hanmiglobal (HG) provides Project Management Services during the Construction and Commissioning Phases of the project.

Scope :Project Management
Client :Goseong Green Power
Location :Goseong, Korea
Capacity: 2,080MW

Coal/Oil-Fired Power



01 Khabat Oil-Fired Power Plant

Scope : Owner's Engineer
Client : MOE (Ministry of Electricity)
Location : Erbil (Kurdish Region), Iraq
Capacity : 300MW((150MW x 2_Oil-fired & 400kV Substation)

02 Papua New Guinea Diesel Power Plant

Scope : Project Manager
Client : Daewoo PNG Power Ltd.
Location : Lae City, Papua New Guinea
Capacity : 34 MW

03 Gimcheon Energy Fuel Conversion

Scope : Technical Advisor
Client : Gimcheon Energy
Location : Gimcheon, Korea
Capacity : 59 MW / 205 ton

04 Bukpyeong Coal-Fired Power Plant

Scope : Due Diligence
Client : Hahn & Company
Location : Donghae, Korea
Capacity : 500MW x 2 units

LNG Power



Combined Cycle Power Plant in Dongducheon

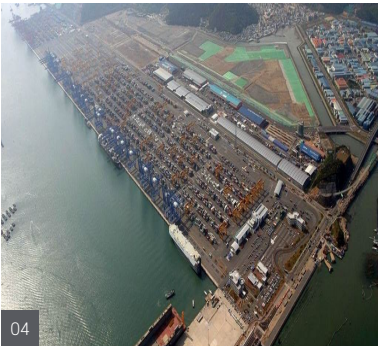
Dongducheon LNG Combined Cycle Power Plant has a 1,716MW of generation capacity. The configuration of this LNG power plant consist of two (2) 858MW units operated by Dongducheon Dream Power starting its COD in March 2015. Hanmiglobal (HG) provides Due Diligence and Lender's Technical Advisor Services

Scope :Lender's Technical Advisor
Client :DongducheonDreamPower
Location :Dongducheon, Korea
Capacity :1,716MW

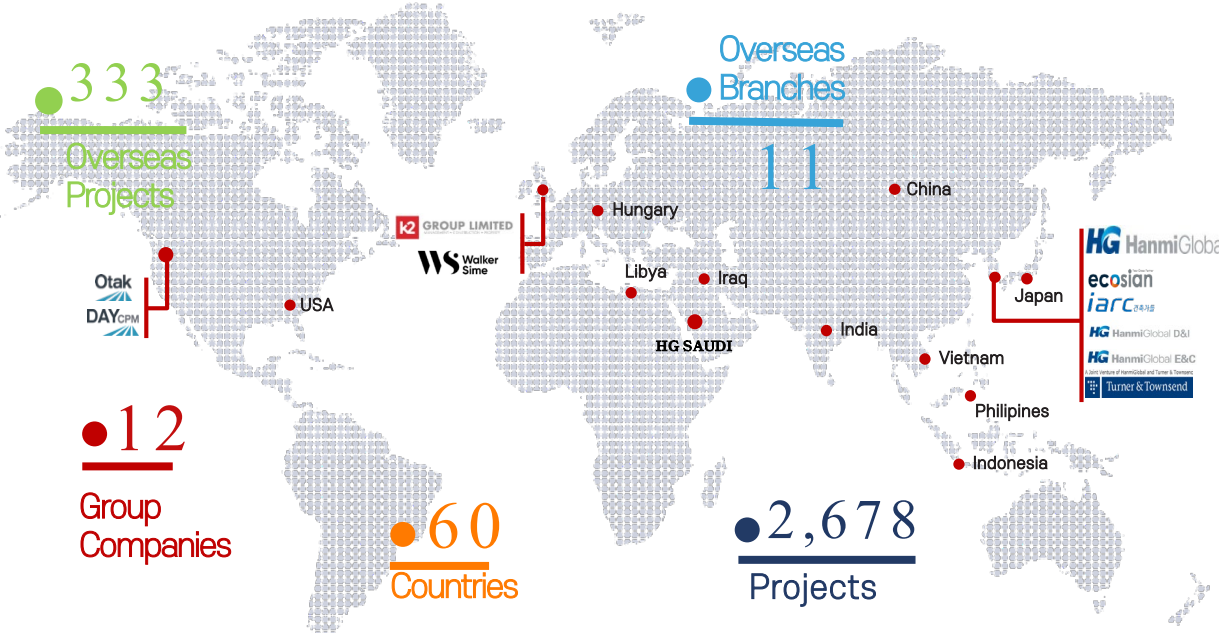
Other Landmark Projects



- 01 Lotte World Tower
Hotel & Residence
B6F/125F, 555m
- 02 Busan LCT
5-Star Signial Hotel
- 03 Oman Shipyard
2-Dry Dock (410m x 95m)
1-Floating Dock (300m x 70m)
- 04 Busan New Port
1,100,000m²
- 05 2002 World Cup Main Stadium
B1F/6F, 58,551.73m²
- 06 Paradise City
Hotel & Residence
330,000m²
- 07 Peru Chinchero New Airprot
Passenger Terminal: 46,900m²
Runway 4,000m x 45m
- 08 South-East Seoul
Logistics Center
B2/7F, 409,319m²



Overseas Activities



✓ Ranked Top8 CM/PM Company in the world by ENR in 2022 (Non-us)

2021 ENR TOP 500

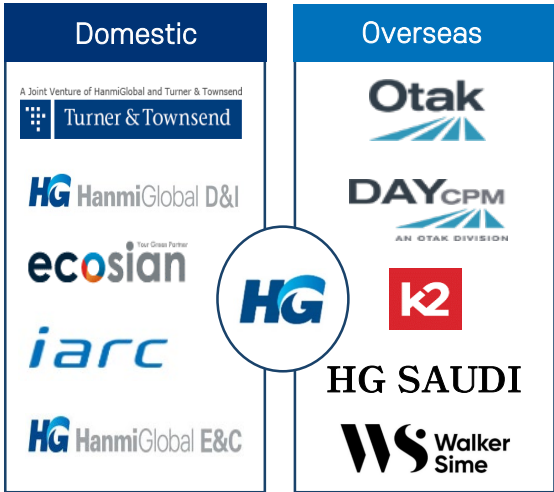
2022 The Top 20 Non-US. Firms in Total Global Construction Management and Program Management

6	WORLEY LTD., North Sydney, Australia	233.1	189.7	422.8
7	STANTEC INC., Edmonton, Canada	118.2	72.0	190.2
8	HANMI GLOBAL CO. LTD., Seoul, South Korea	144.4	27.6	171.9
9	SKANSKA AB, Stockholm, Sweden	134.2	28.1	162.3
10	EHAF CONSULTING ENGINEERS, Cairo, Egypt	149.8	0.0	149.8

✓ Overseas Partners



✓ Group Companies



Headquarters	HanmiGlobal Co., Ltd. 9th FL., City Air Tower Bldg., 36, Teheran-ro 87-gil, Gangnam-gu, Seoul 06164, Korea TEL +82-2-3429-6300 FAX +82-2-3429-6363/4
China	HanmiGlobal Construction (Shanghai) Co., Ltd. Room B2602 The Place, No.100 Zunyi Road, Shanghai 200051, China TEL : +86-21-6385-8713 / FAX : +86-21-6385-5907
Saudi Arabia	HanmiGlobal Saudi LLC Suite No.419, 4th Floor, Akaria Tower No.2, Olaya St., Riyadh Kingdom of Saudi Arabia TEL : +966-11-293-8267 / FAX : +966-11-416-9714
Vietnam	HanmiGlobal Vietnam Co., Ltd. Unit 1501, 15th floor, Vinaconex 9 Tower, Lot HH2-2, Pham Hung Street, Me Tri Ward, Nam Tu Liem District, Hanoi, Vietnam TEL : +84-96-114-5863, +84-70-7118-1395
Japan	OTAK JAPAN Inc. 4F Kato Building, Shiba-daimon 2-9-14, Minato-ku, Tokyo 105-0012, Japan TEL : +81-3-6459-0728 / FAX : +81-3-6459-0729
USA	HanmiGlobal USA, Inc. 651 N. Broad St., Suite 206, Middletown, Delaware 19709, USA
UK	HanmiGlobal UK Limited Peterbridge House 3 the Lakes, Northampton, Northamptonshire, England, NN4 7HB TEL : +44-12-9355-5545
Hungary	HanmiGlobal Hungary Co., Ltd. 1068 Budapest, Kiraly utca 80. Hungary
India	HanmiGlobal India Private Ltd. Unit No. 1408, 14th Floor, Palm Spring Plaza, Golf Course Road, Sector 54, Gurgaon - 122002, Haryana, India TEL : +91-124-406-2935
Poland	HanmiGlobal PL sp. z o.o. ul. Józefa Piłsudskiego 17/4, 35-074 Rzeszów, Poland
Indonesia	Indones ia Rep resentative Office Synthesis Square Tower 2, Lt.5,Jalan Jend. Gatot Subroto Kav. 64/177A, Menteng Dalam, Tebet Jakarta Selatan 12870, Indonesia TEL : +62-21-2854-1440
Libya	Libya Bra nch Villa in Abul-Ashher Tajoura, Tripoli, Libya TEL : +218-91-694-6248
Philippines	Philippines Branch Unit 1 Lanceta Town House, #20 Barandal 4027, City of Calamba, Laguna, Philippines TEL : +63-945-134-3669

